

LOW COST CONTROLS

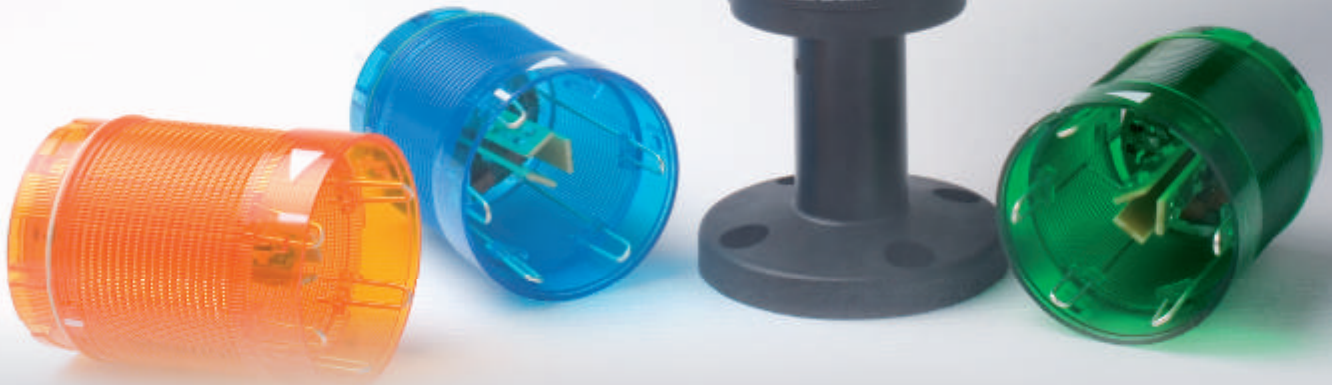
Quality Controls for Less

TEL: +1-713-370-7760

Please contact our sales department for pricing and order information.

WWW.LOWCOSTCONTROLS.COM

CHOOSE
DIFFERENT
COLOURS
SET YOUR
OWN COMBO



E3EE TOWERLights

- > Sleek & Stackable Design
- > SMD LED technology
- > Uniform & bright illumination
- > Continuous, Flashing and Rotary Integrated LED Light Modules available
- > Flexibility to upgrade from Single LED Unit to multiple LED Units
- > IP 65 protection | Wide voltage range from 24V AC/DC to 240V AC
- > Optional feature of Buzzer with dual sound mode - continuous & intermittent with 80 DB output.

INTERNATIONAL APPROVALS:



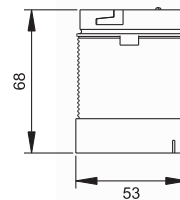
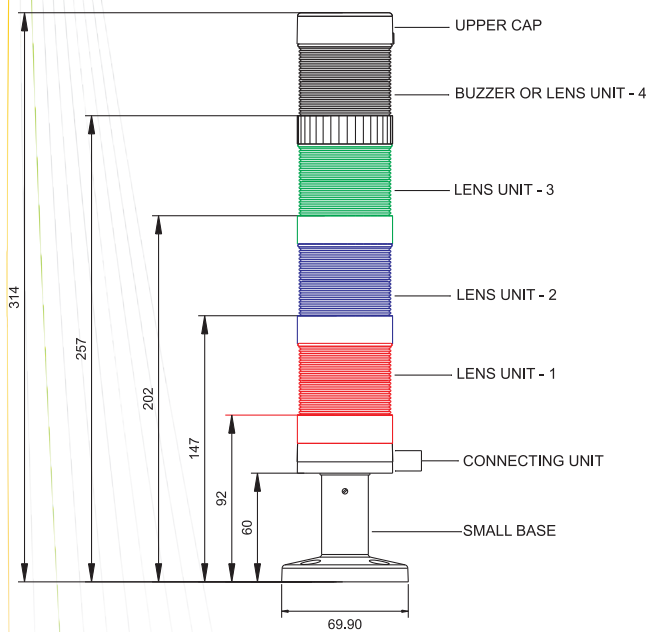
The UL standards extend to:

1 | 2 | 3 | 3R | 4 | 4X | 12 | 13
Indoor or outdoor use primarily to provide a degree of protection against corrosion, windblown dust and rain, splashing water, hose-directed water, and damage from external ice formation.

TECHNICAL INFORMATION

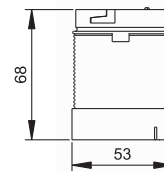
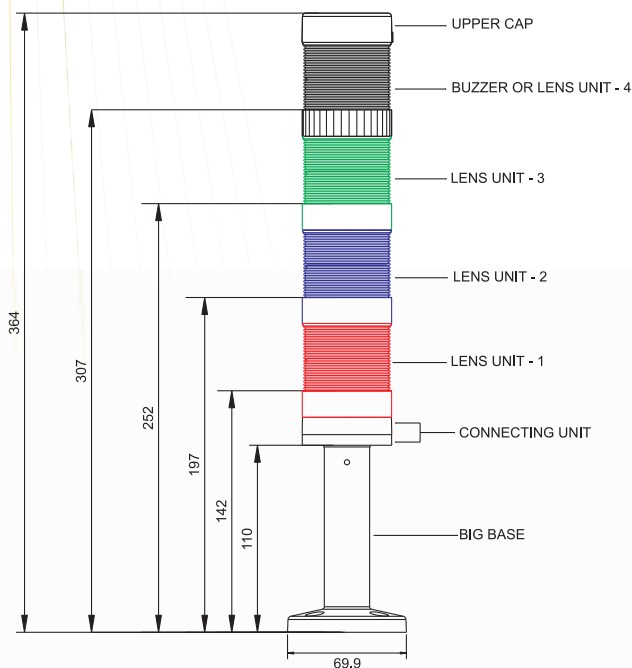
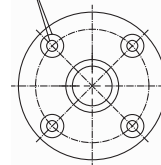
Outer diameter	Ø50mm
Degree of protection	IP65 & UL (1 2 3 3R 4 4X 12 13)
LED type	SMD
Lens colour	RED / GREEN / AMBER / BLUE / WHITE
Luminous mode	Continuous, Blinking & Revolving
Buzzer colour	Black
Buzzer sound level	80dB ± 5dB
Sounding mode	Continuous & Intermittent
Voltage range	24V AC/DC, 110V AC, 240V AC
Limit of operating voltage	±10% of rated voltage
Operating temperature	-30°C to 60°C
Surge test	2 KV
HV test for 60 sec.	1.5 KV
Current rating	20-40mA for 24VAC/DC 10-20mA for 110VAC & 240VAC

Dimensions



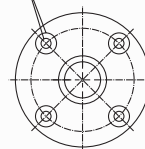
LENS UNIT FOR TOWER LIGHT

COUNTER BORE Ø11.0/Ø5.2, 4Nos.
(SCREW SIZE - M5)

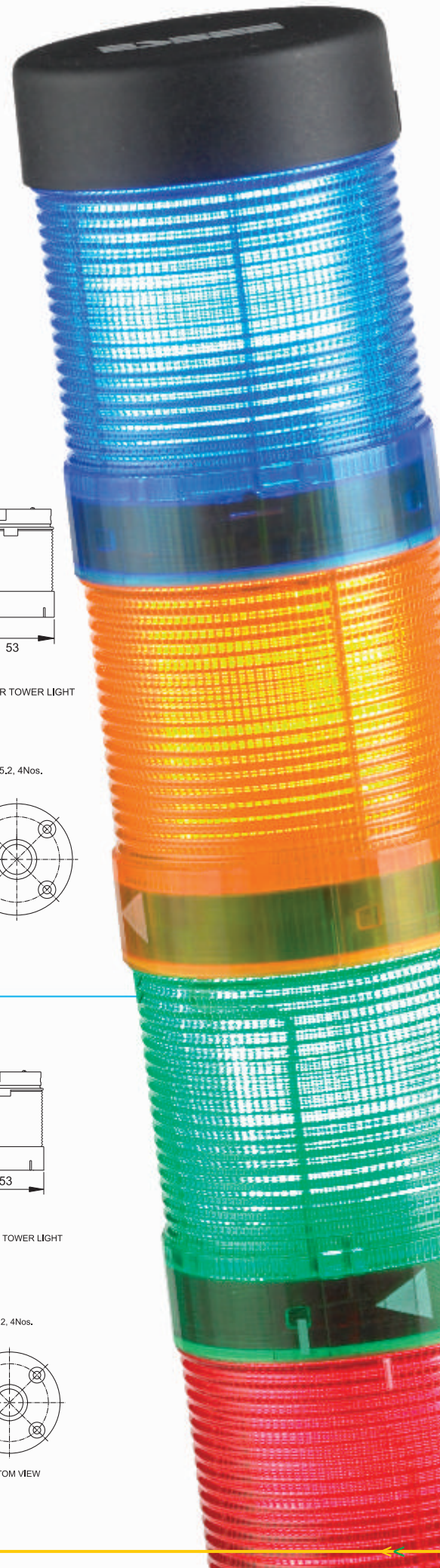


LENS UNIT FOR TOWER LIGHT

COUNTER BORE Ø11.0/Ø5.2, 4Nos.
(SCREW SIZE - M5)



BOTTOM VIEW



TOWER LIGHTS

Ordering Information

	DESCRIPTION	CODE
Tower Light		TW
Base	Small Base (SB)	1
	Big Base (BB)	2
Voltage	240V AC	X
	110V AC	W
	24V AC/DC	U
Unit colour	Red	R
	Green	G
	Amber	A
	Blue	B
	White	W
Luminous mode	Continuous	1
	Blinking	2
	Revolving	3
Buzzer*	Continuous	Z1
	Intermittent	Z2

TW 1 X R 1 G 1 A 2 B 1

For example :
Cat. No. TW1XR1G1A2B1

Description:
Tower Light with small base
240 VAC with Red, Green continuous,
Amber blinking & Blue continuous
illumination

* Buzzer has to be used as last unit in the stack. Maximum number of stacks possible is four.

Standard Available Combinations

Tower light without Buzzer

Type	Description	Cat No.
Single Stack	Tower Light with Small Base 240 V AC with Red continuous illumination.	TW1XR1
Single Stack	Tower Light with Small Base 240 V AC with Red Blinking illumination.	TW1XR2
Two Stack	Tower Light with Small Base 240 V AC with Red continuous & Green continuous illumination.	TW1XR1G1
Two Stack	Tower Light with Small Base 024 V AC/DC with Red Blinking & Green Blinking illumination.	TW1UR2G2
Three Stack	Tower Light with Small Base 240 V AC with Red continuous, Green continuous & Blue continuous illumination.	TW1XR1G1B1
Three Stack	Tower Light with Small Base 240 V AC with Green continuous, Blue continuous & Red Blinking illumination.	TW1XG1B1R2
Four Stack	Tower Light with Small Base 240 V AC with Red continuous, Green continuous, Blue continuous & Amber continuous illumination.	TW1XR1G1B1A1

Tower light with Buzzer

Type	Description	Cat No.
Single Stack	Tower Light with Small Base 240 V AC with Buzzer continuous	TW1XZ1
Two Stack	Tower Light with Small Base 240 V AC with Red continuous illumination & Buzzer continuous	TW1XR1Z1
Two Stack	Tower Light with Small Base 024 V AC/DC with Red Blinking illumination & Buzzer continuous	TW1UR2Z1
Three Stack	Tower Light with Small Base 240 V AC with Red continuous, Green continuous illumination & Buzzer continuous	TW1XR1G1Z1
Three Stack	Tower Light with Small Base 024 V AC/DC with Red Blinking, Green continuous illumination & Buzzer continuous	TW1UR2G1Z1
Four Stack	Tower Light with Small Base 240 V AC with Red continuous, Blue continuous illumination & Buzzer continuous	TW1XR1G1B1Z1
Four Stack	Tower Light with Small Base 024 V AC/DC with Green continuous, Blue continuous, Red Blinking illumination & Buzzer continuous	TW1UG1B1R2Z1

Note: Mentioned products are available as ex-stock, for any special requirement please refer ordering information OR contact us on following address.